

Certificate of Analysis

Date: 2025-04-07 15:25:53 -04:00
 Serial: LL030645
 LightLab: BW-LABS
 Operator: DAIANA
 Sample ID: test 2
 Method: LightLab HPLC
 Test Type: Gummy- Advanced
 Weight / Volume: 8 g
 Solvent: 40 ml
 Temperature: 26.8 °C
 Notes:

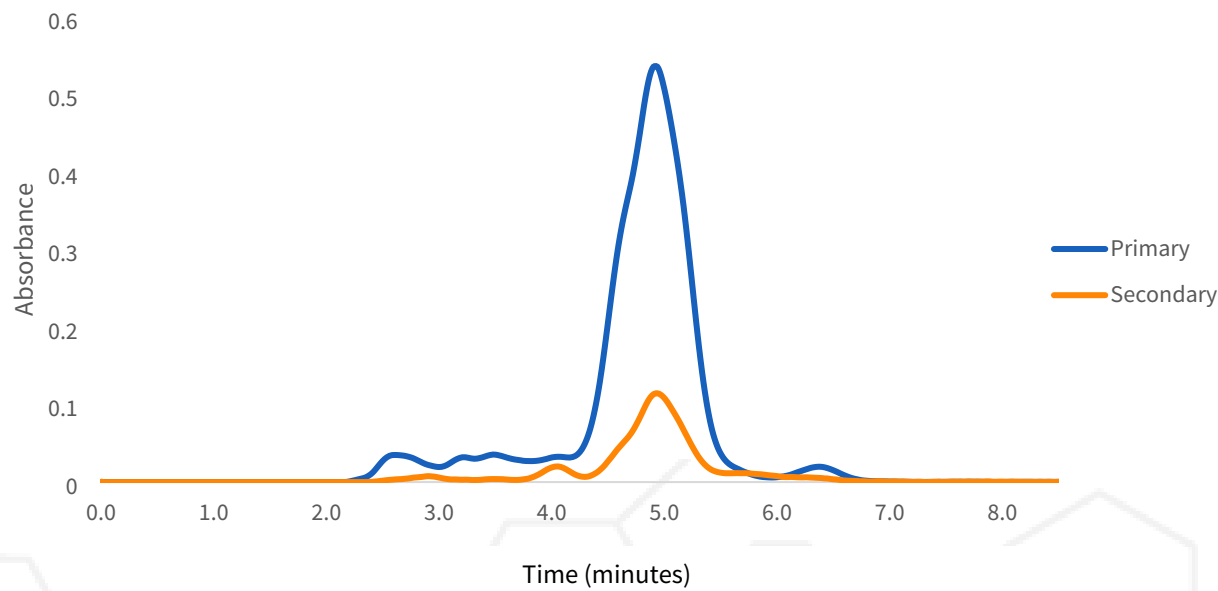
Cultivar:
 Moisture: 0.0%
 Col Tests Remaining: 24
 CoA Revision: 1
 Calibration Exp: 2026-03-21
 Product: Ultra Blend Gummy - Blue Raspberry
 SKU:
 Batch: UMB0075

Cannabinoid Profile

Analyte	Per 7.228 g Serving (mg)	Per 1.0 Pieces(mg)	%	LOQ
THC-A	ND	ND	ND	0.013
Δ9-THC	27.3	27.3	0.38	0.013
CBD-A	ND	ND	ND	0.013
CBG-A	ND	ND	ND	0.013
CBD/CBG	1.9	1.9	0.027	0.013
CBN-A	ND	ND	ND	0.013
CBN	ND	ND	ND	0.013
CBC-A	ND	ND	ND	0.013
CBC	ND	ND	ND	0.013
Δ8-THC*	45.4	45.4	0.63	0.10
Δ10-THC	9.3	9.3	0.13	0.013
THCV-A	ND	ND	ND	0.013
THCV	1.5	1.5	0.021	0.013
Terpenes			Low	
Total THC	27.3	27.3	0.38	
Total Cannabinoids	85.4	85.4	1.2	

ND = Not Detected; n/a = Not Analyzed; LOQ = Limit of Quantification; Total THC = (0.877 x THC-A) + Δ9-THC; Total CBD = (0.877 x CBD-A) + CBD. * Δ8THC has lower precision and higher detection limit than other cannabinoids.

Chromatogram



Change History

Date	User	Action
2025-04-07 15:25:53 -04:00		Test Recorded
2025-05-07 09:42:17 -04:00		Generated a CoA (revision 0)
2025-11-10 15:35:45 -04:00	DA	Changed Operator from "dai" to "DAIANA". Changed EdblProduct from "ultra blend gummy" to "Ultra Blend Gummy ". Changed Batch from "Um0075" to "UM0075".
2025-11-10 15:36:02 -04:00		Generated a CoA (revision 1)

Approved

04/07/2025

Date



Scan for Authenticity

The signatory confirms that the Operator has performed the sample preparation according to the LightLab User's Guide. This report is for quality assurance purposes only. These results relate only to the sample included on this report. Orange Photonics makes no claims as to the efficacy, safety, or risks associated with any detected or non-detected level of any compounds reported herein. Orange Photonics makes no claims regarding the adherence to sample preparation guidelines, by the operator, as outlined in the LightLab User's Guide.

